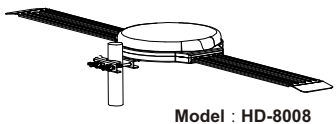


# LAVA OMNI DIRECTIONAL DIGITAL OUTDOOR HDTV ANTENNA

## OMNIPRO Version



**Introduction:**

This is a special designed new concept omni-directional antenna for digital outdoor analog and terrestrial HDTV broadcasting reception. It is the best solution for home reception and digital portable TV reception. Complete accessories are included for wall or pole mounting.

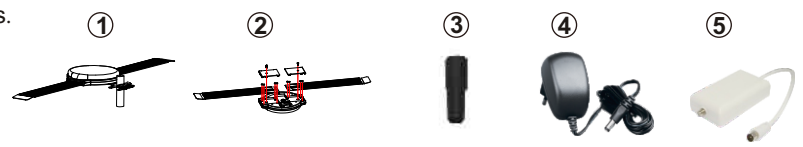
**Technical Data:**

- Receiving Range: FM/VHF/UHF
- Gain: VHF:28dB;UHF:32dB
- Max Output Level: 108dB $\mu$ V
- Impedance: 75 $\Omega$
- Noise Figure:  $\leq$ 3dB
- Power Supply: DC 12V 100mA output

**Included in Package:**

Before start your installation, please check the contents.

1. Antenna main unit
2. Mounting accessories
3. Water-proof kit
4. AC/DC power adaptor
5. Power inserter

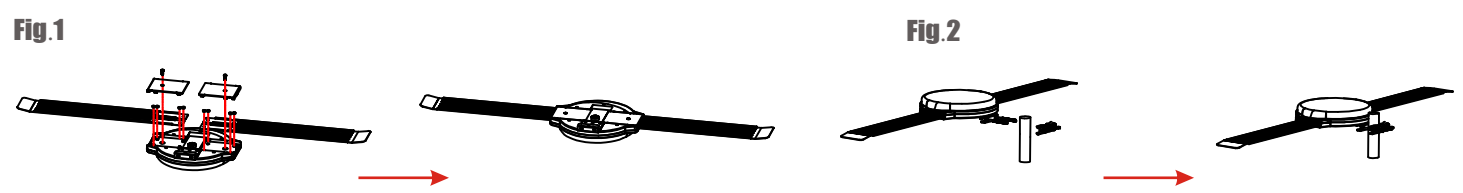


**Product Features:**

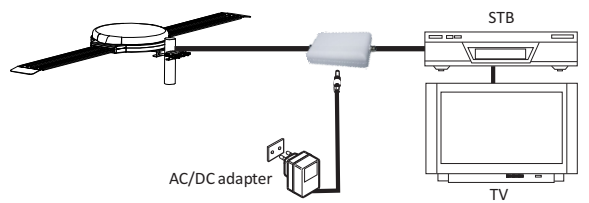
- Anti-UV coating and waterproof design.
- Lightweight, compact size and easy to install.
- For both analog and digital HDTV signal reception
- Built-in high gain and low noise amplifier
- With dipole inbuilt for the excellent UHF band signal reception.
- Specially compatible with HDTV of various digital terrestrial signal (DVB-T; ISDB-T; DMB-T/H; ATSC)

**Mounting the antenna:**

- (Fig.1) Use the screw drivers to install the antenna  
 (Fig.2) Use the pole mounting accessories to fix the antenna on the pole



**Installation:** Please take following (Fig.3) installation instruction for reference.



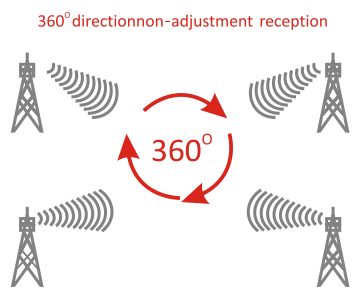
**Installation: Connected Through set-top-box (Fig.3)**

Note: This antenna can receive omni-directional signal. There is no need to adjust the antenna as it can get clear TV picture in any position, please organize the coaxial cable for neat, tidy and safety.

**Operation Instruction:**

Note:For the best reception,Please check the following conditions

1. Keep the antenna away from the sources of interference: keep the antenna away from those big power consumption devices,such as air conditioner,elevator,hair dryer and microwave oven...etc.
2. Place the antenna near windows when use the antenna in indoor environment.
3. Install the antenna as high as possible: in digital terrestrial reception,if there are some interceptions between antenna and transmission tower,it will cause the signal loss temporary. So if the antenna is installed as possible, those interceptions will be reduced.



**LAVA Electronics Inc.**  
 Tech Support: 909-235-6611  
 E-mail: support@lavasat.com  
[www.lavasat.com](http://www.lavasat.com)